

# GO EPSOM



**HORTON**  
The Horton was originally a Victorian asylum chapel, later known for pioneering music therapy. It is now a vibrant arts venue. The Horton is also used for meetings, conferences, celebrations, events and exhibitions.

Nora Willis, the UK's first postwomen, signed up to deliver mail in Epsom when men were sent to fight in World War 1.

**EPSOM TRAIN STATION**



Led Zeppelin legend Jimmy Page lived at Miles Road in the 1950s.



**LAINE THEATRE SCHOOL**

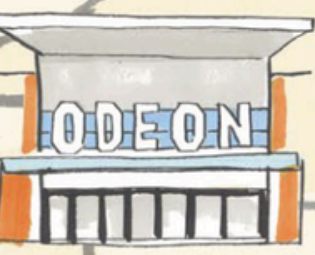


**Epsom Cycling Club.** It's been going strong since 1891. Now one of the country's longest serving cycling clubs.

**WEST HILL**



The Spread Eagle was a coaching inn and hotel dating back to the 17th century.



**ODEON**



**EPSOM COLLEGE**



Emily Davison lost her life in Epsom in the struggle for womens rights.

The Evocation of Speed is a statue of two racehorses, Diomed, the winner of the first Derby in 1780, and the 2001 winner, Galileo.



**LIBRARY**

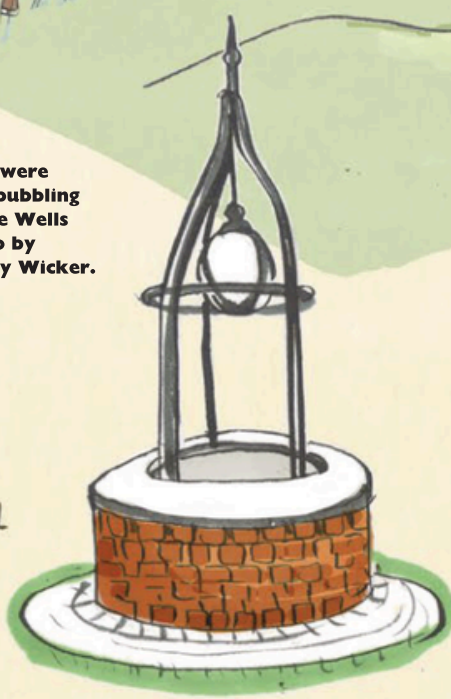


**TOWN HALL**

**EPSOM COMMON**

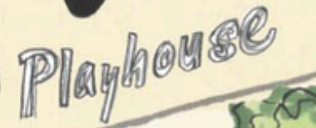


The soothing Epsom salts were discovered in the waters bubbling up from the ground in The Wells estate over 400 years ago by a local farmer called Henry Wicker.



**EPSOM WELL**

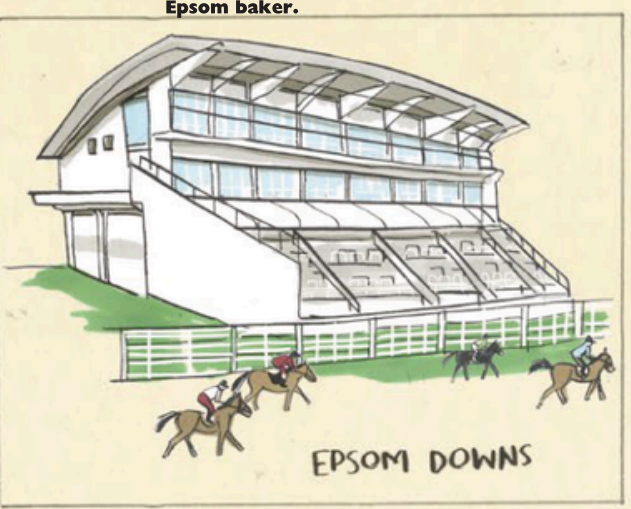
**MOUNTHILL GARDENS**



**Playhouse**



**Methobis Church**



Mrs Beeton, author of the Book of Household Management, lived on Epsom Downs from the age of 7, she learnt her pastry skills from a local, Epsom baker.

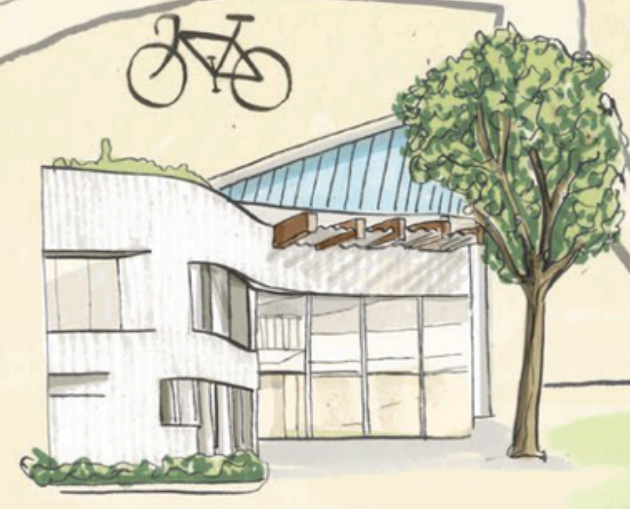
**EPSOM DOWNS**

Home to The Derby, the world's greatest flat race.



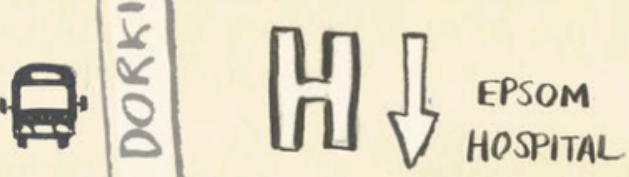
**ROSEBERY PARK**

Former prime minister Lord Rosebery donated the parkland to the public in 1913.

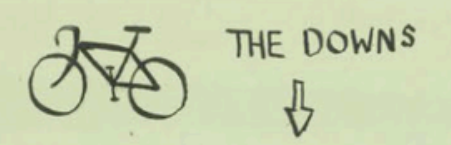


**UNIVERSITY FOR THE CREATIVE ARTS**

Oscar winners, world renowned fashion designers and Turner Prize nominees are just some of the graduates from the University for the Creative Arts.



**EPSOM HOSPITAL**



**THE DOWNS**

**DORKING ROAD**

**WATERLOO ROAD**

**CHASE ROAD**

**HOOK ROAD**

**EAST STREET**

**UPPER HIGH STREET**

**HIGH STREET**

**THE PARADE**

**WORPLE ROAD**

**ASHLEY ROAD**

# Parks and Open Spaces

Surrounded with green spaces waiting to be explored



In 1725, Daniel Defoe wrote, 'this town is wholly adapted to pleasure... folks don't come to Epsom to stay within doors' and the same is true today. The beautiful countryside around Epsom invites exploring in all seasons.

With a choice of the Downs, Epsom Common and Horton Country Park, walkers and cyclists are spoiled for choice. Download a guide to one of Epsom's heritage walks and bike rides and explore footpaths and green spaces that are rich in wildlife and history.

Moments from the centre of town, Rosebery Park is the place for picnics, play and perambulations, with an impressive collection of mature trees providing shade on sunny days. The 12 acres of land were gifted to Epsom by former Prime Minister Lord Rosebery in September 1913 as 'proof of his deep and abiding affection for Epsom'.

Famous for its racecourse, Epsom Downs' 600 acres of rolling downland offer sweeping views of London and rural Surrey. The Downs is home to racehorse training grounds with the gallops being used daily, it is a working landscape.

# Shopping

Epsom's bustling town centre has a mix of independent shops and bigger names, in a historic setting.



From booksellers and butchers to specialists in music and art supplies, the town is home to a mix of established businesses and innovative new openings. The Spread Eagle, a coaching inn and hotel dating back to the 17th century, and the historic clock tower are home to small, independent businesses.

The high street's beating heart is the Ashley Centre, literally and figuratively right in the middle of town. You'll find all the essentials here, from quality food to fashion and technology.

There's been a market in the centre of Epsom since the Restoration era. Today, weekly markets selling a diverse range of locally produced foods including fresh bread, honey, eggs and gin are worth exploring. Regular Vegan and Farmers Markets and speciality Antiques and Craft Fairs take place too. The marketplace is as busy today as at any moment in its past.

# History of Epsom

For a small town, Epsom packs a big, historical punch.



Nestled between London and the Surrey Hills, and one of England's first spa towns, Epsom has been home to many famous residents over the centuries, from royal courtesans to rock stars, as well as one of the world's most iconic sporting events, the Derby.

The Derby and Epsom's other famous export, Epsom salts, are inextricably linked. It was the discovery of healing mineral springs on Epsom Common in 1618 that started the craze for 'taking the waters'. Fashionable visitors like Charles II, Nell Gwyn and Samuel Pepys visited to take the magnesium-rich waters, enjoy the horseracing and lively social scene.

In 1913, suffragette Emily Davison was struck by the King's horse Anmer during the Derby while protesting for women's right to vote. She is now remembered with a statue in Epsom's marketplace, unveiled in 2021.

The Victorian era saw the world's first domestic goddess, Mrs Beeton, calling Epsom home.

A guided history walk is the perfect way to bring Epsom's rich history to life.

# How to get to Epsom

## BY ROAD

Epsom is a 20-minute drive from junctions 7 and 8 on the M25. If travelling from London, take the A3 or A24 and follow signs to Epsom.

## BY RAIL

Epsom station is connected by Southern Trains and South West Trains which run direct services from London Victoria, London Waterloo and London Bridge several times an hour. Epsom is served by services from other towns in Surrey as well as Gatwick Airport.

## BY BIKE

Epsom has an extensive network of cycle routes, enabling cyclists to avoid busy main roads. Route 22 of the National Cycle Network enters Epsom & Ewell at Tattenham Corner, crossing Epsom Downs on its way to Portsmouth.

Find information and maps at [www.surreycc.gov.uk](http://www.surreycc.gov.uk) and [www.sustrans.org.uk](http://www.sustrans.org.uk)



[goepsom.com](http://goepsom.com)

# While You Are Here

Arts and culture unique to Epsom



The end of year summer exhibition at the University for the Creative Arts' Epsom campus is the place to spot the work of a future Alexander McQueen or Stella McCartney.

Epsom Playhouse has been the beating heart of Epsom's cultural life since 1984, hosting theatre, ballet, opera, live comedy, music and usually, an annual Christmas panto. Take in the latest blockbuster or a live screening of Shakespeare from the Odeon Luxe's comfy recliner seats.

The Horton is a vibrant arts, conference and event venue located in a converted Grade II listed Victorian chapel. The building, later known for pioneering music therapy was part of the historic cluster of five psychiatric hospitals. These were home to 10,000 patients from London, the largest of its kind in Europe.

The annual MGSO4 Festival (named after the chemical formula for Epsom Salts) puts creative arts at the centre of the community, whilst Laine Theatre Arts, one of the UK's foremost performing arts schools has been at home in Epsom for nearly 50 years – arts and culture is intrinsically linked to Epsom.

# Eating Out and Where to Stay

From luxury to budget, a warm welcome awaits



Whether you're partial to a pint or are seeking the perfect flat white, you'll find it in Epsom.

From cosy pubs to organic coffee shops, delicatessens and eateries serving wood-fired sourdough pizza, crepes, sushi and classic bacon sarnies, there's plenty to satisfy the biggest appetite.

A thriving street food scene in the Marketplace caters to those wanting to grab lunch on the go, with pop-up businesses cooking up tasty dishes from all over the world.

For a special meal, you're spoiled for choice. Epsom is home to both quirky independents and familiar national names offering something to suit every taste and budget. From Sicilian to Persian, Indian and Greek, visitors can enjoy authentic cuisine from around the world.

There are several affordable hotels in the heart of town, indulge, stay over and explore the area!

# Epsom

